

RECEIVED
LARAMIE COUNTY
CHEYENNE, WY.

DEC 23 AM 9 09

CERTIFIED LAND CORNER RECORDATION

DESCRIPTION OF CORNER EVIDENCE FOUND, AND ORIGINAL RECORD (if known)

Sec. 7	Sec. 8	Found: Limestone, 20" x 10" x 4" with possible notches, loose, not in original position. Used witness corners to establish position.
Sec. 18	Sec. 17	

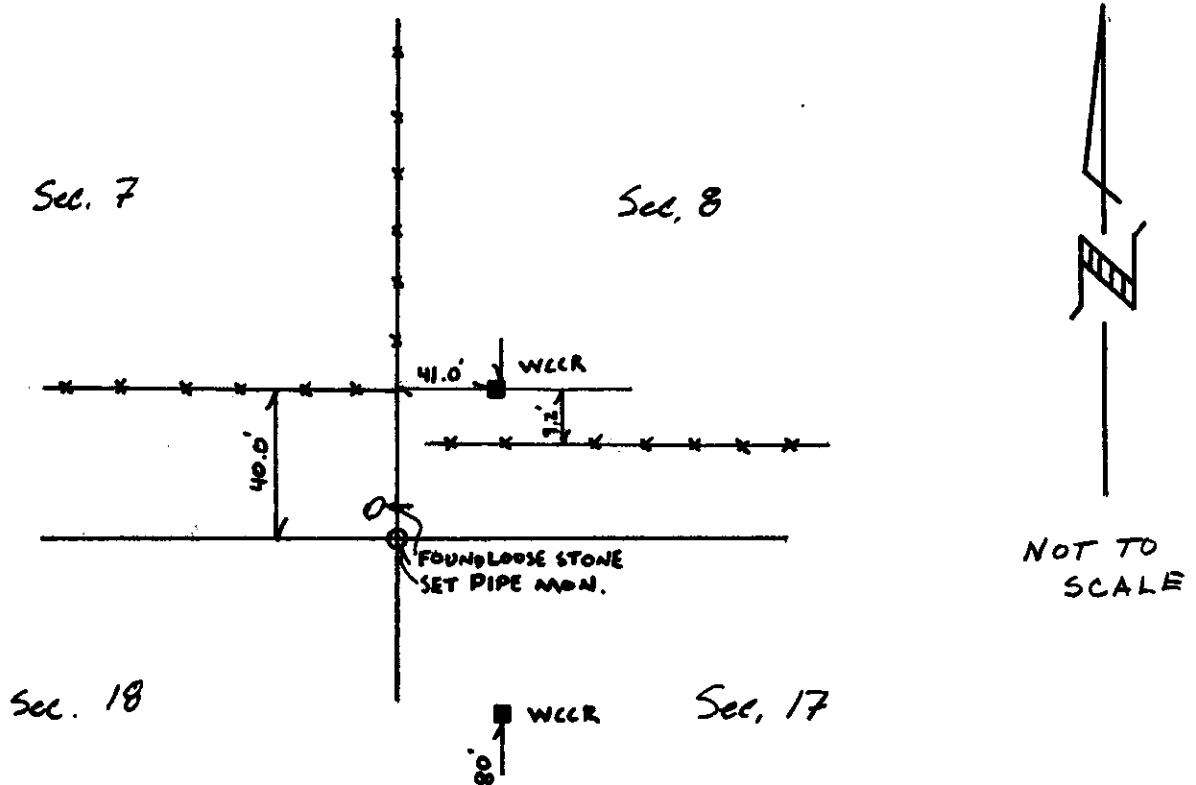
Accessories found - See notes on back.
GLO: Set granite boulder 23" x 10" x 7" for corner to sections 7, 8, 17, & 18.

T 13N, R 64W

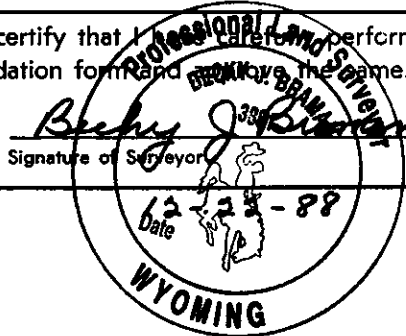
DESCRIPTION OF MONUMENT AND ACCESSORIES ESTABLISHED TO PERPETUATE THE ORIGINAL LOCATION OF THIS CORNER:

Set: Set aluminum pipe monument, 2" i.d., 36" long, with 3" aluminum cap. Left stone as memorial. See Map of Survey filed with Laramie County Clerk for dimensions to adjacent corners.

SKETCH, WITH COURSE AND DISTANCE TO ADJACENT CORNER IF DETERMINED IN THIS SURVEY. (May Sketch or Paste Reproduction on Reverse Side.)



I, BECKY J. BRAMAN certify that I have performed or reviewed the work done on the diagrammed corner as reported on this recordation form and approve the same.



STATE OF WYOMING,
Office of Clerk and Recorder,
County of LARAMIE

This "corner record" was filed for record on the _____ day of _____, 19____, was noted on the cross-index plat and is assigned page No. _____, in book No. _____.

County Official			
Cross Index No. <u>35</u>	T. <u>13N</u>	R. <u>64W</u>	Mer.
_____	T. _____	R. _____	Mer.
_____	T. _____	R. _____	Mer.
_____	T. _____	R. _____	Mer.
_____	T. _____	R. _____	Mer.
_____	T. _____	R. _____	Mer.
_____	T. _____	R. _____	Mer.

Witness corner - Granite stone lying northeast, with chiseled "WCCR"
on southwest face.

Witness corner - Granite stone lying southeast, with chiseled "WCCR"
on northwest face.

Note: Laramie County Engineer's office has no specific notes on the
witnessing of this road, but other notes, especially the Chalk
Bluffs Road notes, show corners set 40 feet to the East and West
of North-South road and set at 56.4 feet diagonally from
intersections, usually NE and NW.

1301